

Features added to Troy Vision V3.0.71.0

Mail merge runtime error

Microsoft have changed a setting in merging letters & documents in Word; you may find that you get an error saying that a macro is already running. If so, go to Settings / Personal Settings / People and turn off the check box as shown at the bottom of the image below. As this is a Personal Setting, each affected user will need to change it.

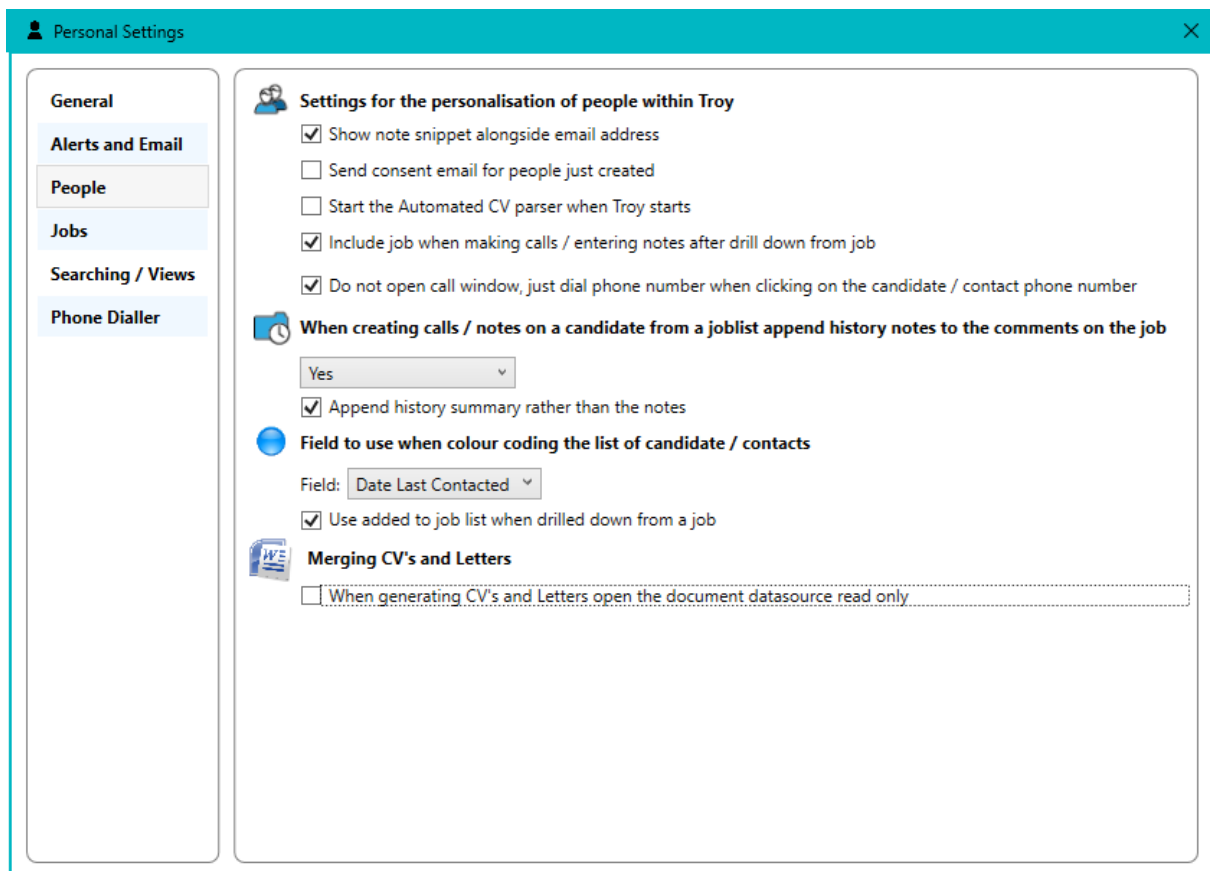


Figure 1, New option for mail merge error resolution